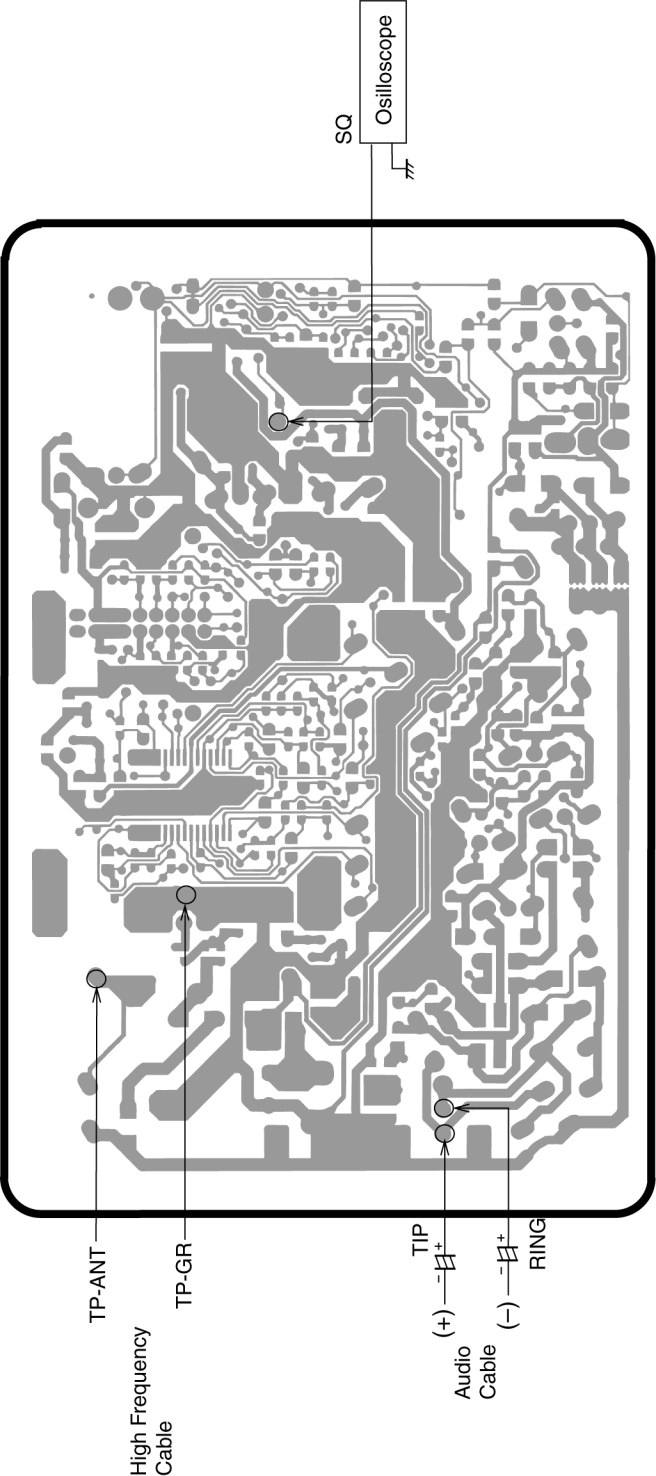
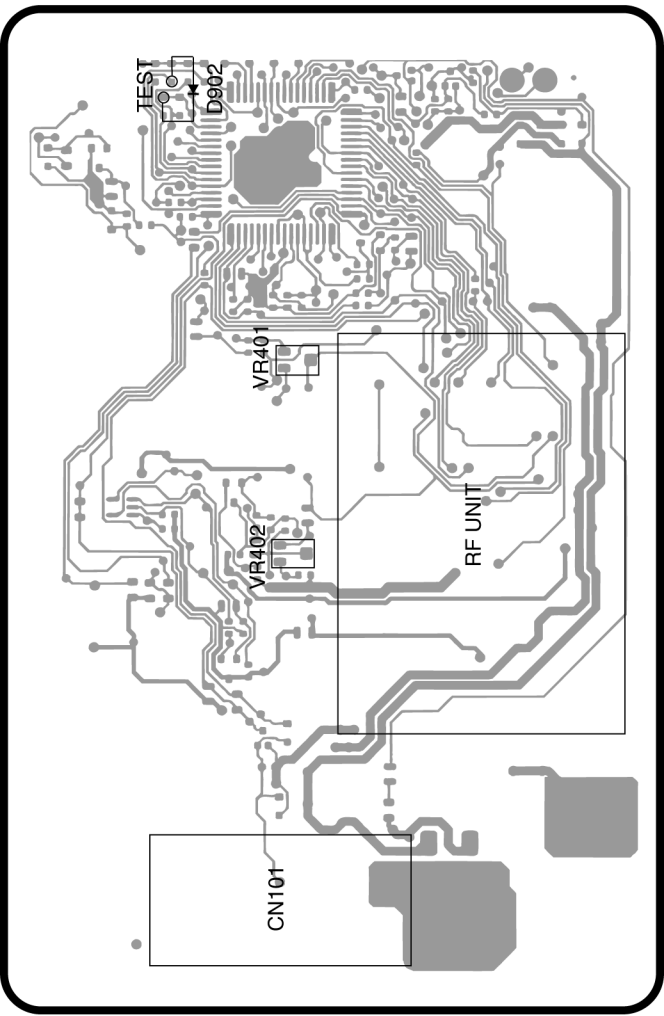
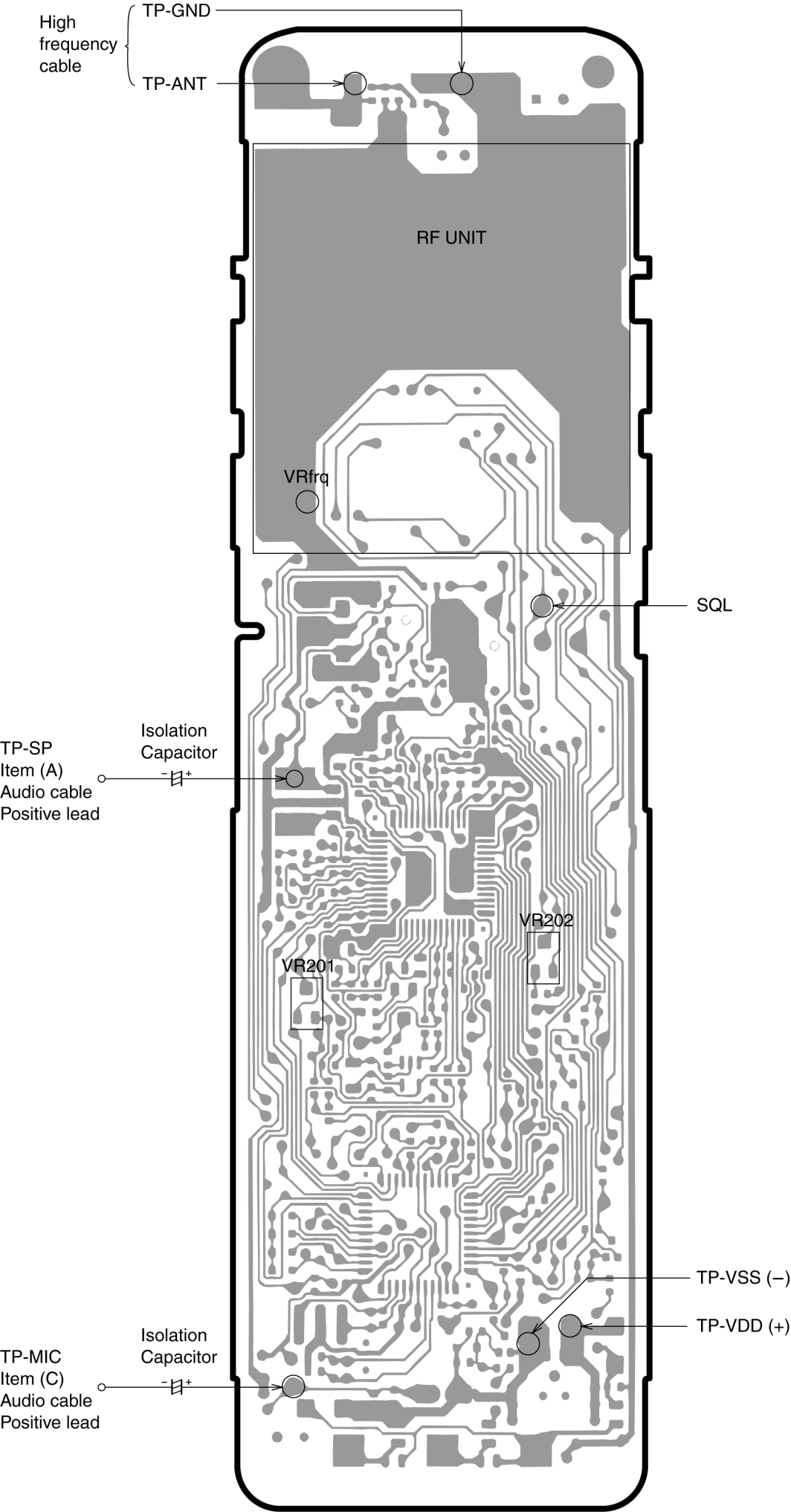
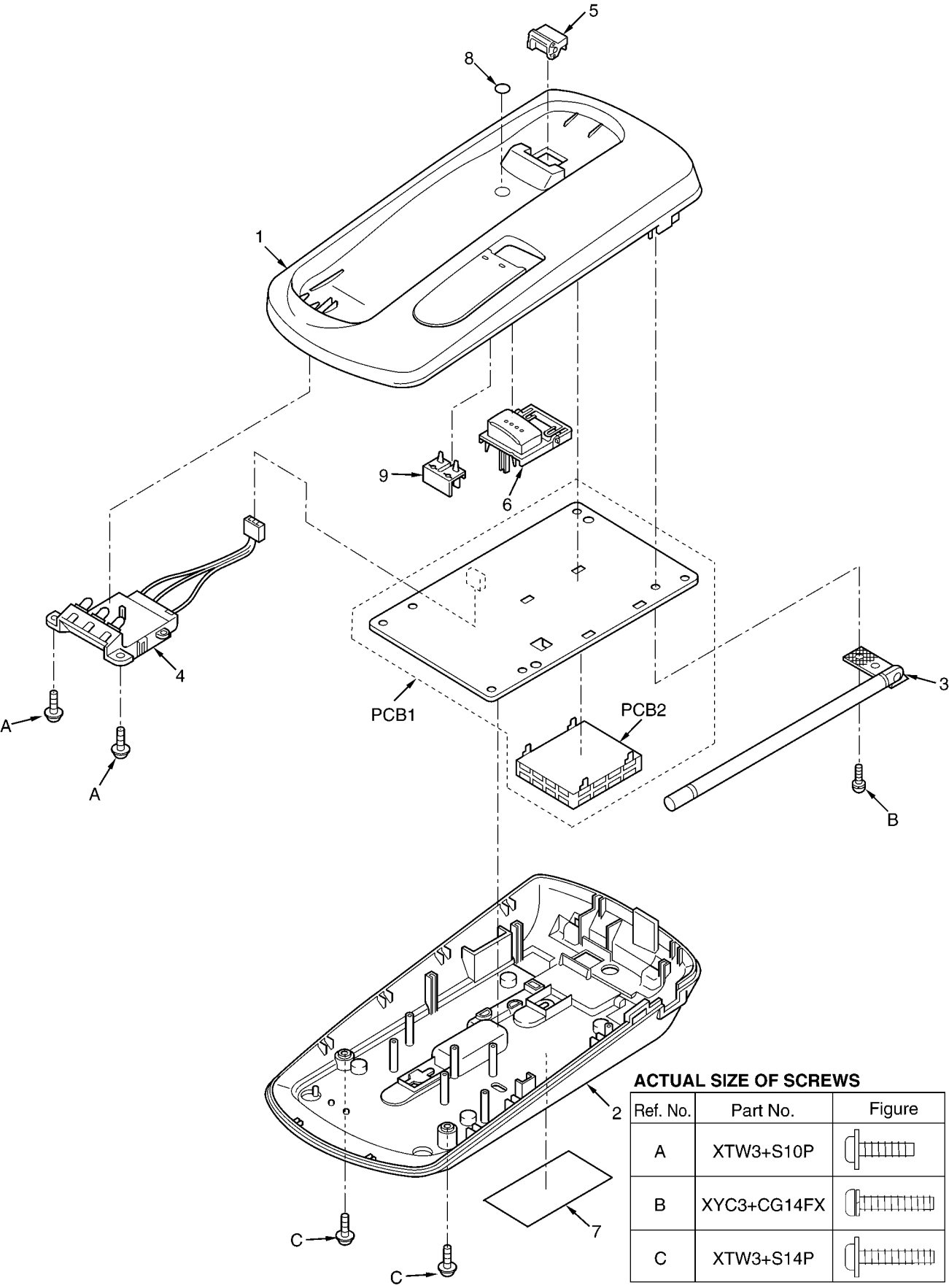


Panasonic






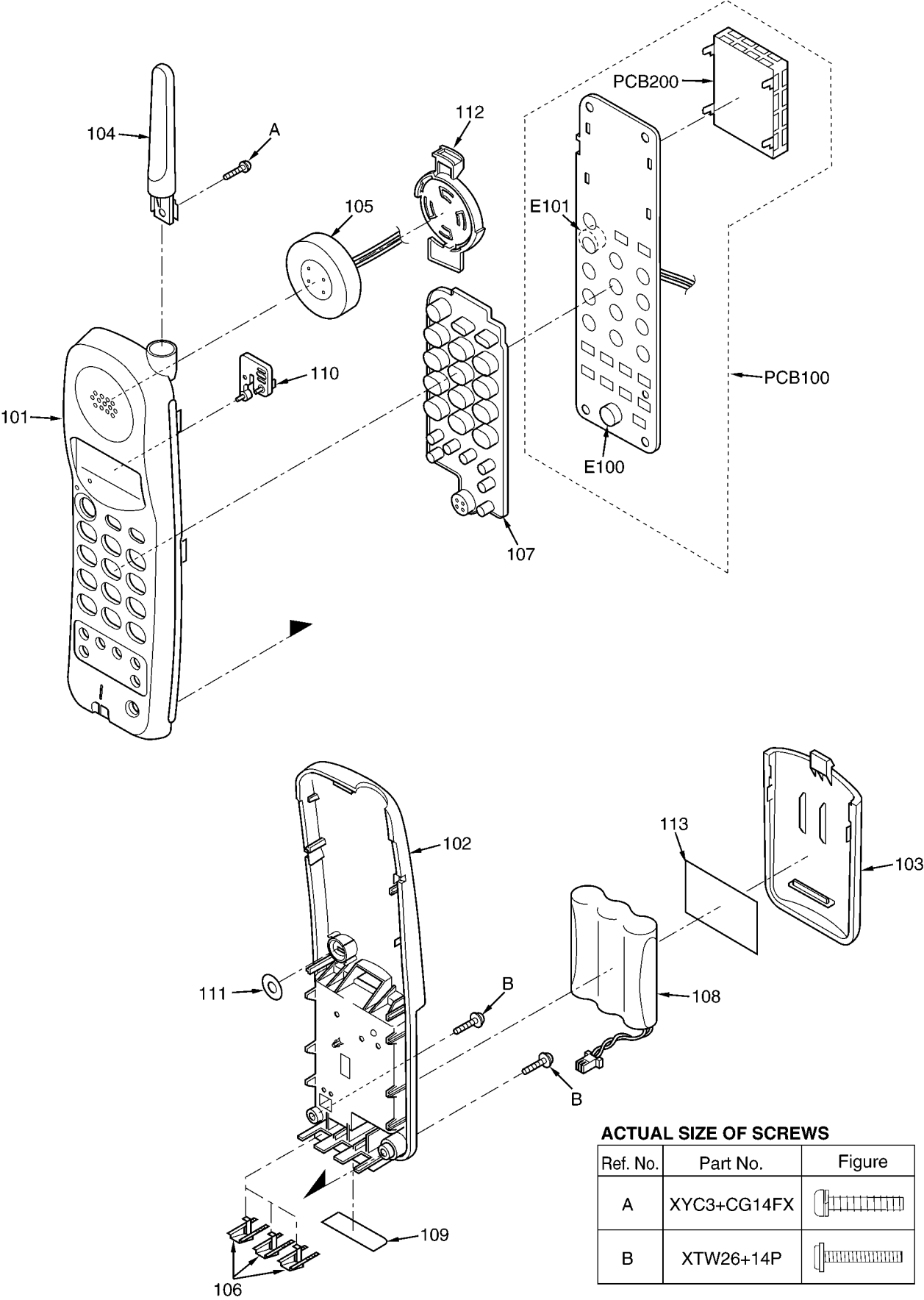






ACTUAL SIZE OF SCREWS

Ref. No.	Part No.	Figure
A	XTW3+S10P	
B	XYC3+CG14FX	
C	XTW3+S14P	



ACTUAL SIZE OF SCREWS

Ref. No.	Part No.	Figure
A	XYC3+CG14FX	
B	XTW26+14P	

(-) Screw Driver

(A)

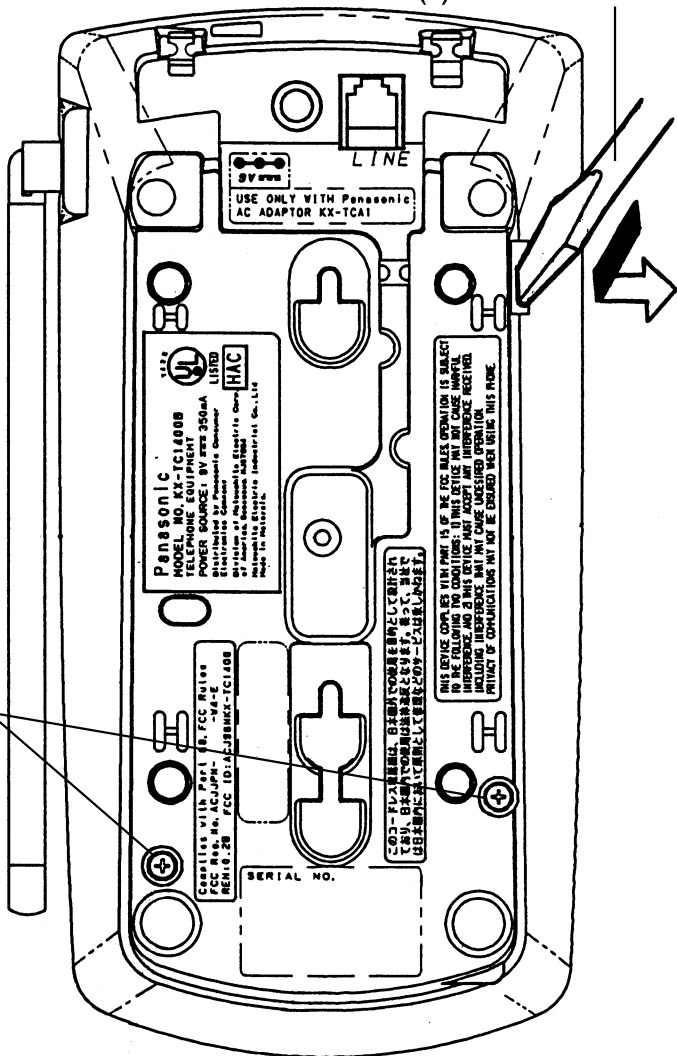
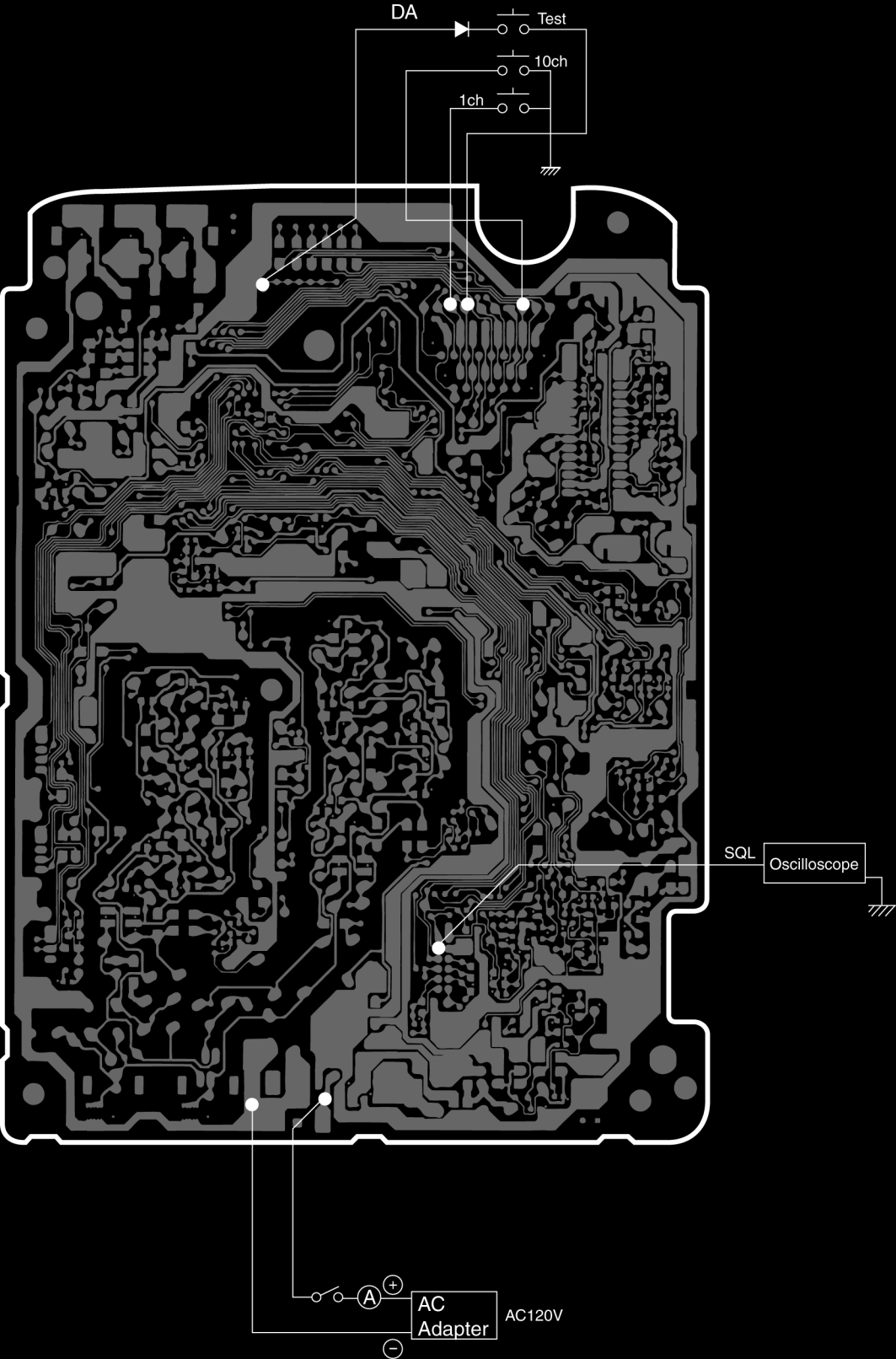
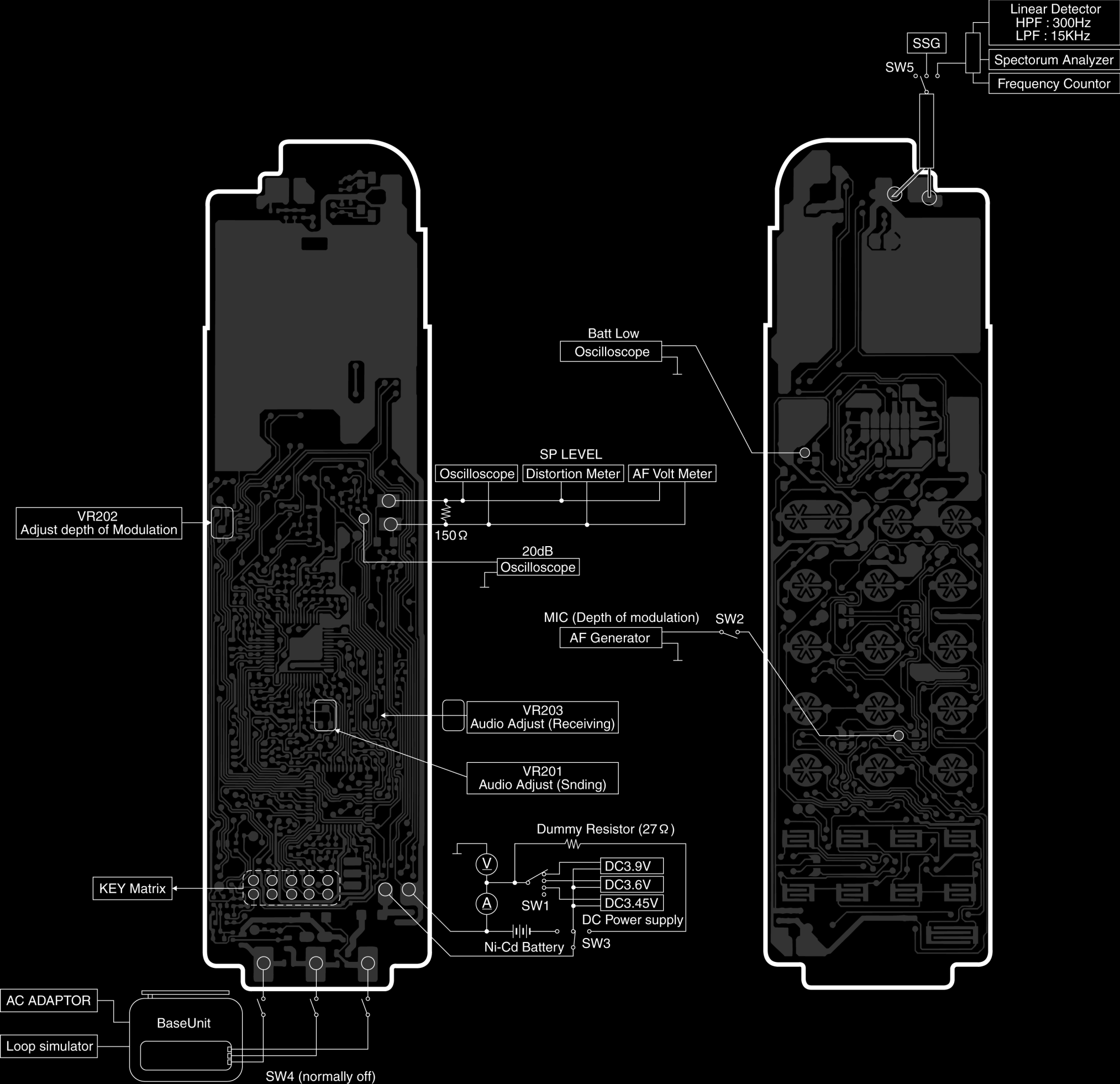
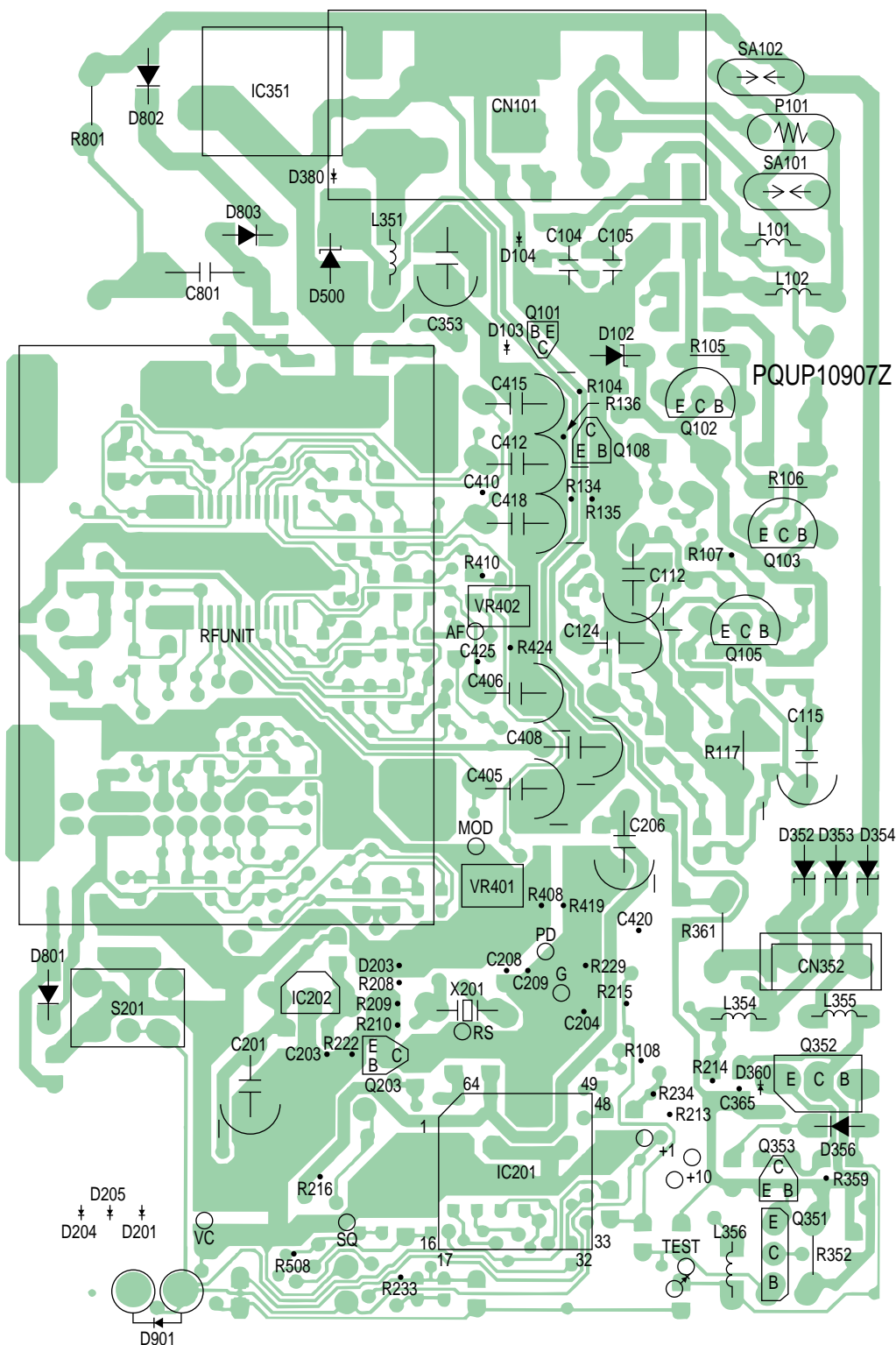
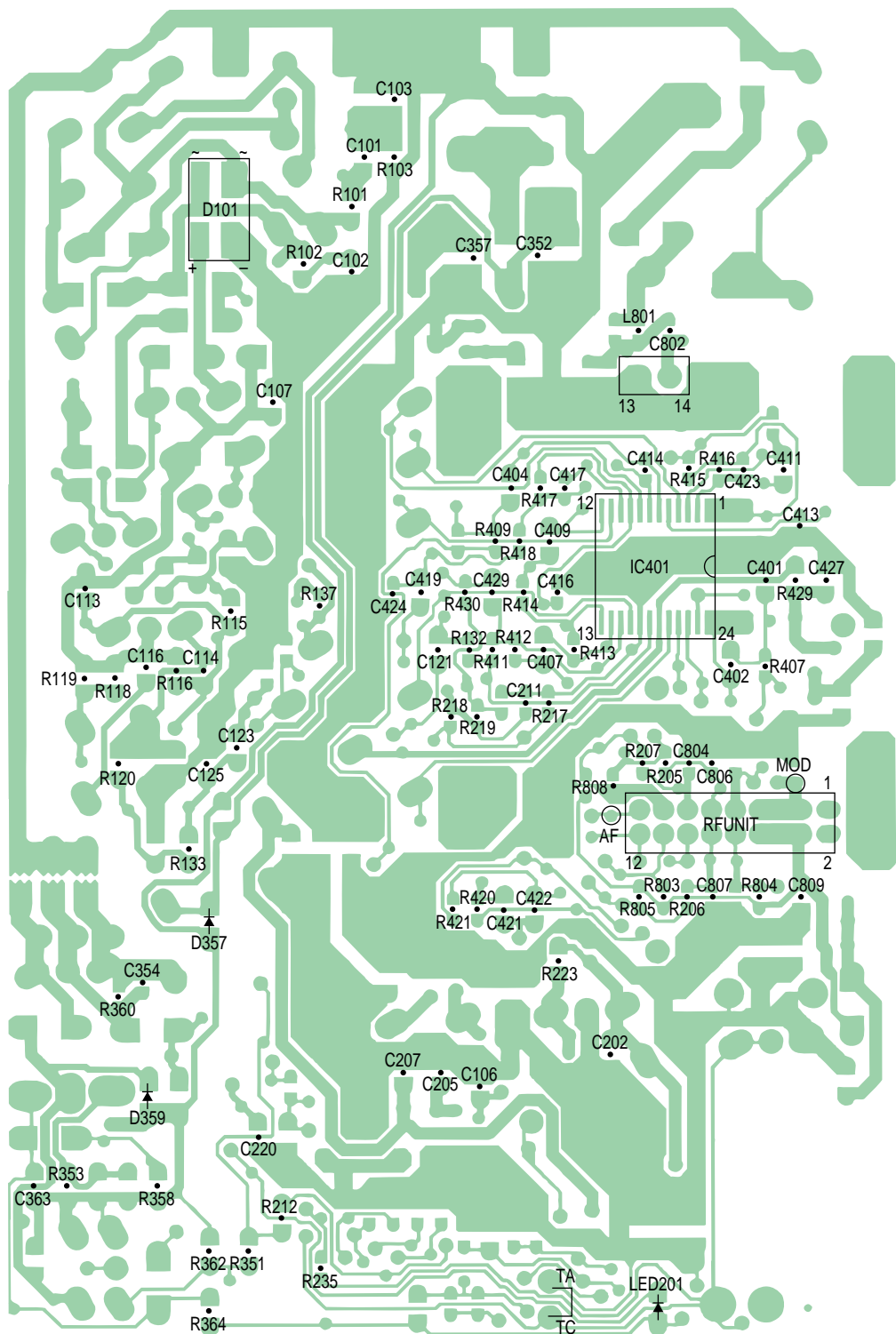


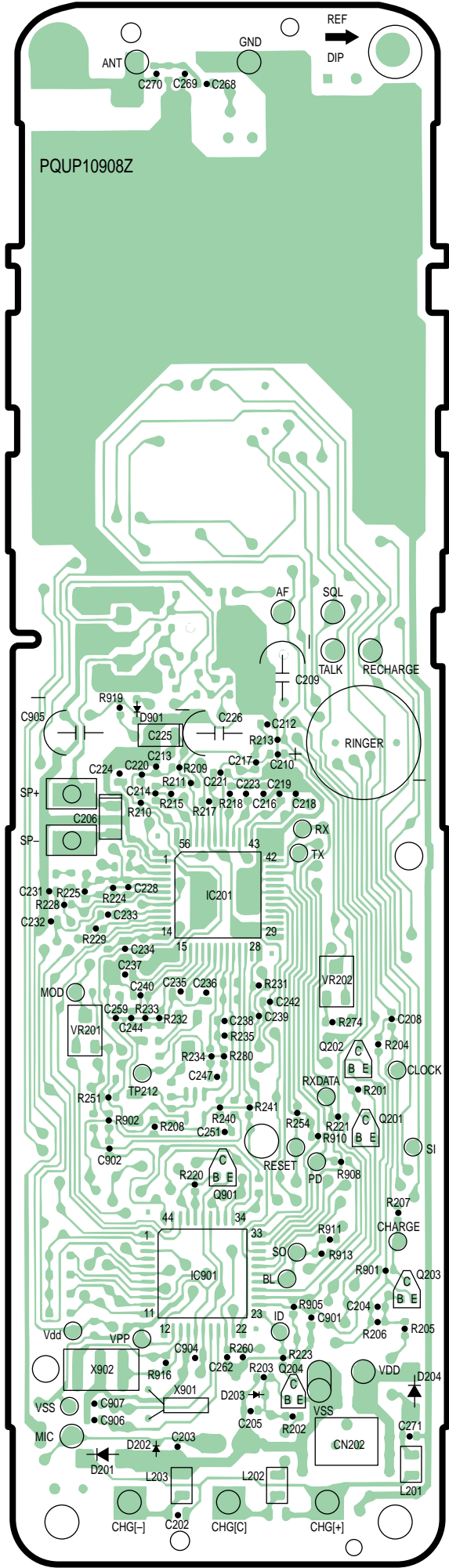
Fig. 1



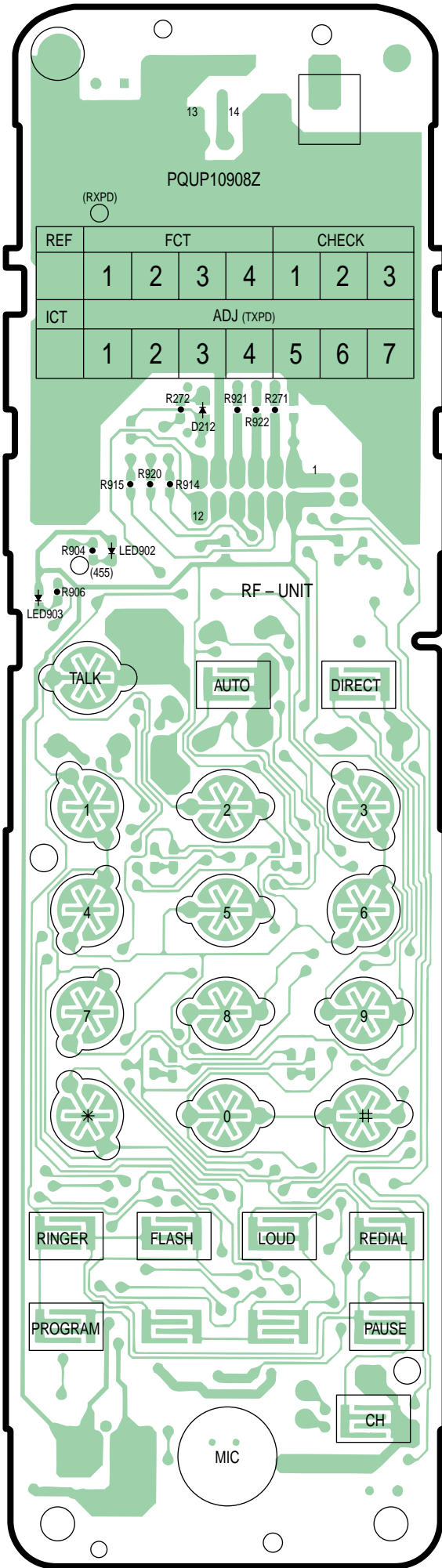








(Flow Solder Side View)



(Component View)

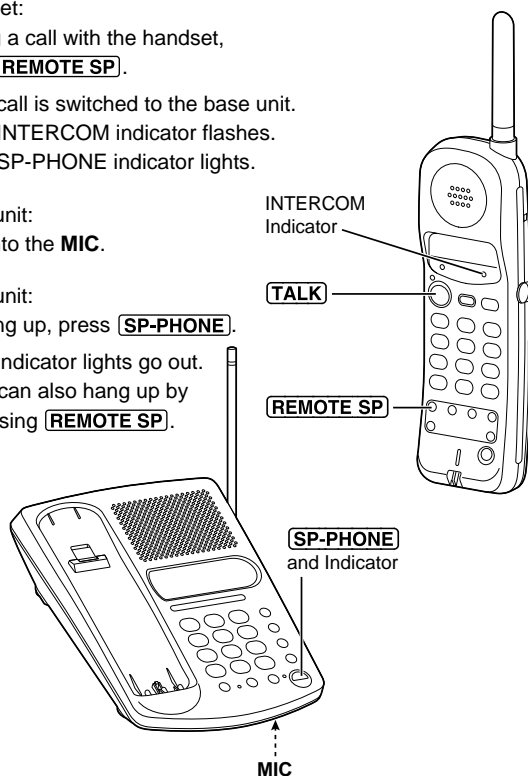
Remote Speakerphone

You can switch a call with the handset to the speakerphone easily.

- 1 Handset:
During a call with the handset, press **REMOTE SP**.
 - The call is switched to the base unit.
 - The INTERCOM indicator flashes.
 - The SP-PHONE indicator lights.

- 2 Base unit:
Talk into the **MIC**.

- 3 Base unit:
To hang up, press **SP-PHONE**.
 - The indicator lights go out.
 - You can also hang up by pressing **REMOTE SP**.



You can turn on the base unit speakerphone by using the handset as a remote control.

Making calls using the handset as a remote control

1. Handset:
Press **REMOTE SP**.
2. Handset:
Dial a telephone number.
 - You may also dial with the base unit keypad.
3. Base unit:
Talk into the **MIC**.
4. Handset:
To hang up, press **REMOTE SP**.
 - You may also hang up by pressing **SP-PHONE**.

When you redial

A number dialed with the handset keypad is saved in the handset.
A number dialed with the base unit keypad is saved in the base unit.

To switch to the handset (while using the remote speakerphone)

Press **TALK**.

- You can continue the conversation using the handset.
- To hang up, press **TALK** or place the handset on the base unit.

Answering calls using the handset as a remote control

1. Handset:
Press **REMOTE SP**.
2. Base unit:
Talk into the **MIC**.
3. Handset:
To hang up, press **REMOTE SP**.
 - You may also hang up by pressing **SP-PHONE**.

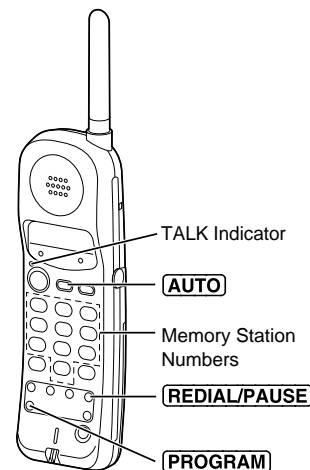
Speed Dialer (Handset)

Storing Phone Numbers in Memory

You can store up to 10 phone numbers in the handset. The dialing buttons (**0** to **9**) function as memory stations.

The TALK indicator light must be off before programming.

- 1 Press **PROGRAM**.
 - The TALK indicator flashes.
- 2 Enter a phone number up to 22 digits.
 - If you misdial, press **PROGRAM** to end storing, then start from step 1.
- 3 Press **AUTO**.
- 4 Press a memory station number (**0** to **9**).
 - A beep sounds.
 - To store other numbers, repeat steps 1 through 4.



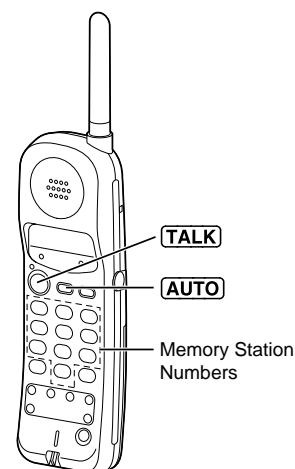
- If a pause is required for dialing, press **REDIAL/PAUSE** where needed. Pressing **REDIAL/PAUSE** counts as one digit.

To erase a stored number

Press **PROGRAM** ➔ **AUTO** ➔ the memory station number (**0** to **9**) for the phone number to be erased.

Dialing a Stored Number

- 1 Press **TALK**.
- 2 Press **AUTO**.
- 3 Press the memory station number (**0** to **9**).
 - The stored number is dialed.



- Numbers stored in the handset can only be dialed by the handset.
- If your line has rotary or pulse service, any access numbers stored after pressing **TONE** will not be dialed.

Speed Dialer (Base Unit)

Storing Phone Numbers in Memory

You can store up to 5 numbers in the base unit. The dialing buttons (1 to 5) function as memory stations.

The TALK and SP-PHONE indicator lights must be off before programming.

- 1 Press **AUTO/PROGRAM**.
 - The IN USE/CHARGE indicator flashes.

- 2 Enter a phone number up to 22 digits.

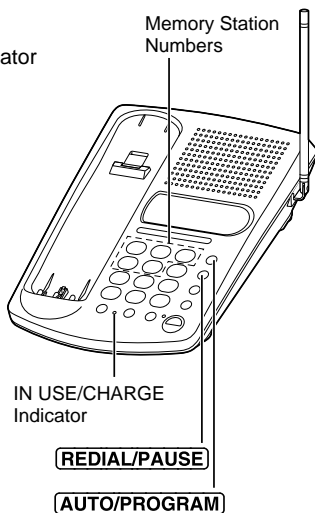
- If you misdial, press **AUTO/PROGRAM** twice to end storing, then start from step 1.

- 3 Press **AUTO/PROGRAM**.

- 4 Press a memory station number (1 to 5).

- A beep sounds.
- To store other numbers, repeat steps 1 through 4.

- If a pause is required for dialing, press **REDIAL/PAUSE** where needed. Pressing **REDIAL/PAUSE** counts as one digit.

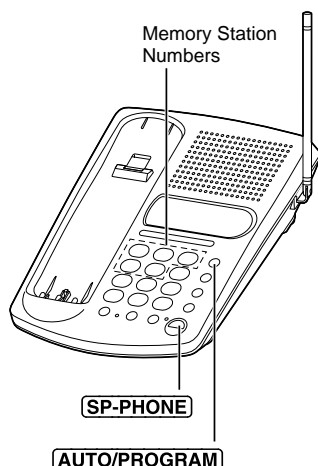


To erase a stored number

Press **AUTO/PROGRAM** twice ➡ the memory station number (1 to 5) for the phone number to be erased.

Dialing a Stored Number

- 1 Press **SP-PHONE**.
- 2 Press **AUTO/PROGRAM**.
- 3 Press the memory station number (1 to 5).
 - The stored number is dialed.



- Numbers stored in the base unit can only be dialed by the base unit.
- If your line has rotary or pulse service, any access numbers stored after pressing **TONE** will not be dialed.

Special Features

FLASH Button

Pressing **FLASH** allows you to use special features of your host PBX such as transferring an extension call or accessing special telephone services (optional) such as call waiting.

Selecting the flash time

The flash time depends on your telephone exchange or host PBX. You can select the following flash times: i90, 100, 110, 250, 300, 400, 600, 700 msec (milliseconds) i, **using the handset near the base unit.**

Your phone comes from the factory set to i700 msec i.

The TALK and SP-PHONE indicator lights must be off before programming.

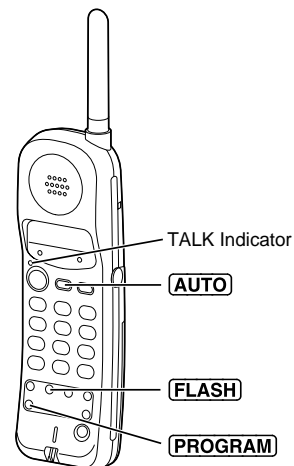
- 1 Press **PROGRAM**.
 - The TALK indicator flashes.

- 2 Press a dialing button (1 to 8).

- | | |
|-------------|-------------|
| 1: 90 msec | 2: 100 msec |
| 3: 110 msec | 4: 250 msec |
| 5: 300 msec | 6: 400 msec |
| 7: 600 msec | 8: 700 msec |

- 3 Press **AUTO**.

- 4 Press **FLASH**.
 - A beep sounds.



- If 3 beeps sound in step 4,
 - ñ a wrong key was pressed. Restart from step 1.
 - ñ the handset is too far from the base unit. Move closer to the base unit or place the handset on the base unit. Restart from step 1.
- If a power failure occurs, the setting will return to the factory preset (700 msec). Reprogram if necessary.
- If you are connected via a PBX, a longer flash time may be necessary to use PBX functions (transferring a call, etc.). Consult your PBX installer for the correct setting.

