

11. Schematic Diagrams

11-1 TTX Micom

MICOM OPTION

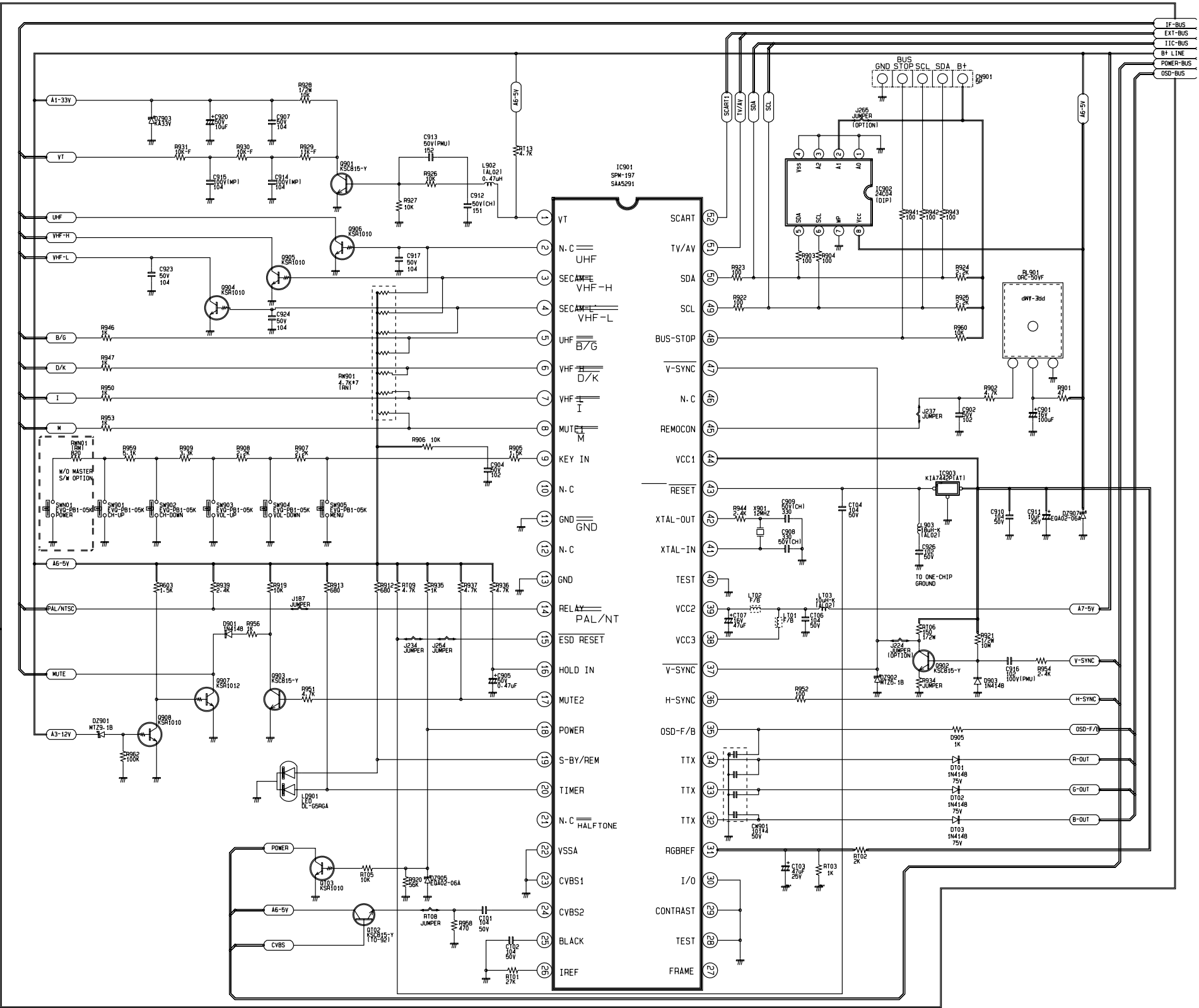
LOC	NON TTX u-COM		TTX u-COM	
LIC	CODE-NO	SPEC	CODE-NO	SPEC
C908	2201-000193	C-C : 10PF 50V CH	2201-000980	C-C : 30PF 50V CH
C909	2201-000573	C-C : 47PF 50V CH	2201-000980	C-C : 30PF 50V CH
C919	2202-000796	C-AXIAL : 1NF 50V		DELETE
C922	2305-000665	C-FILM : 104 63V		DELETE
C925	2401-001495	C-AL : 47UF 16V		DELETE
C101	DELETE	DELETE	2202-000109	C-AXIAL : 104 50V
C102	DELETE	DELETE	2202-000109	C-AXIAL : 104 50V
C103	DELETE	DELETE	2401-001495	C-AL : 47UF 16V
C104	DELETE	DELETE	2202-000109	C-AXIAL : 104 50V
C106	DELETE	DELETE	2202-000109	C-AXIAL : 104 50V
C107	DELETE	DELETE	2401-001495	C-AL : 47UF 16V
D905	0401-000005	DIODE 1N4148	2001-000429	R-CARBON : 1K 1/8W
D906	0401-000005	DIODE 1N4148		DELETE
D907	0401-000005	DIODE 1N4148		DELETE
D908	0401-000005	DIODE 1N4148		DELETE
IC901		S2M193		SPM-197
IC903	1203-000515	K1A7042P-AT	1203-000641	K1A7442P-AT
J111			3812-000219	JUMPER
J184	3812-000219	JUMPER	2001-000857	R-CARBON 560 1/8W
J185	3812-000219	JUMPER	2001-000857	R-CARBON 560 1/8W
J191	3812-000219	JUMPER	2001-000857	R-CARBON 560 1/8W
J234	DELETE	DELETE	3812-000219	JUMPER
J237	DELETE	DELETE	3812-000219	JUMPER
J239	3812-000219	JUMPER		DELETE
J246	3812-000219	JUMPER		DELETE
J254	DELETE	DELETE	3812-000219	JUMPER
J264	3812-000219	JUMPER		DELETE
J265	DELETE	DELETE	3812-000219	JUMPER
L101	DELETE	DELETE	2901-000297	FERRITE-BEAD
L102	DELETE	DELETE	2901-000297	FERRITE-BEAD
L103	DELETE	DELETE	2701-000114	COIL AL02 10uH
Q104	DELETE	DELETE	0501-000293	KS4539
Q102	DELETE	DELETE	0501-000389	KS0315-Y
Q103	DELETE	DELETE	0504-000123	KS01010
R905	2001-000472	R-CARBON : 2.7K 1/8W	2001-000290	R-CARBON : 10K 1/8W
R907	2004-001291	R-CARBON : 820 1/8W	2001-000449	R-CARBON : 2.2K 1/8W
R908	2001-000214	R-CARBON : 1.1K 1/8W	2001-000449	R-CARBON : 2.2K 1/8W
R909	2001-000449	R-CARBON : 2.2K 1/8W	2001-000591	R-CARBON : 3.3K 1/8W
R910	2001-000290	R-CARBON : 10K 1/8W		DELETE
R916	2001-000281	R-CA : 1/8T 68K-J		DELETE
R917	2001-000281	R-CA : 1/8T 10K-J		DELETE
R918	2001-000281	R-CA : 1/8T 510-J		DELETE
R934	2001-000449	R-CARBON : 2.2K 1/8W	3812-000212	JUMPER
R938	2001-000472	R-CARBON : 2.7K 1/8W		DELETE
R940	2001-001234	R-CARBON : 75K 1/8W		DELETE
R944	2004-001291	R-CARB : 65K 1/8W	2001-000005	R-CARB 2.4K 1/8W
R945	2001-001052	R-CARB : 10K 1/8W		DELETE
R948	2001-000241	R-CARB : 1.1K 1/8W		DELETE
R955	2001-000429	R-CARB : 1.1K 1/8W		DELETE
R957	2001-000832	R-CARB : 1510 1/8W		DELETE
R958	DELETE	DELETE	2001-000793	R-CARB : 470 1/8W
R959	DELETE	DELETE	2001-000800	R-CARB : 5.1K 1/8W
R101	DELETE	DELETE	2001-000563	R-CARB : 27K 1/8W
R102	DELETE	DELETE	2001-000577	R-CARB : 2K 1/8W
R103	DELETE	DELETE	2001-000429	R-CARB : 1K 1/8W
R104	DELETE	DELETE	2008-001052	R-FUSIBLE : 39 2W
R105	DELETE	DELETE	2001-000290	R-CARB : 10K 1/8W
R106	3812-000219	JUMPER	2001-000362	R-CARB : 150 1/8W
R108	DELETE	DELETE	3812-000219	JUMPER
R109	DELETE	DELETE	2001-000734	R-CARB : 4.7K 1/8W
R113	DELETE	DELETE	2001-000734	R-CARB : 4.7K 1/8W
D101	DELETE	DELETE	0401-000005	DIODE 1N4148
D102	DELETE	DELETE	0401-000005	DIODE 1N4148
D103	DELETE	DELETE	0401-000005	DIODE 1N4148
X901	2801-003224	32.768KHz	2801-001476	12MHz
R820	2008-000299	R-FUSIBLE 47 2W	2008-001052	R-FUSIBLE 2W 39
R821	2008-000264	R-FUSIBLE 1 1W		DELETE
J802	DELETE	DELETE	3812-000219	JUMPER
D7805	DELETE	DELETE	2003-000705	R-METAL 47K 2W AA
D7806	DELETE	DELETE	0403-000295	DIODE M725-1B
R406	2001-0001410	R-CARBON 43 1/2W	2001-001126	R-CARB 300 1/2W

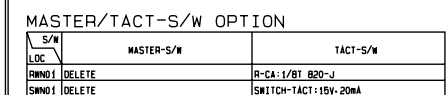
SYSTEM OPTION

SYSTEM	CS-SYSTEM	OK-SYSTEM	CB-SYSTEM
LOC	CODE-NO	CODE-NO	CODE-NO
R947	R-CA: 1/8T 1K-J	R-CA: 1/8T 1K-J	DELETE
R950	R-CA: 1/8T 1K-J	DELETE	DELETE
R953	R-CA: 1/8T 1K-J	DELETE	DELETE

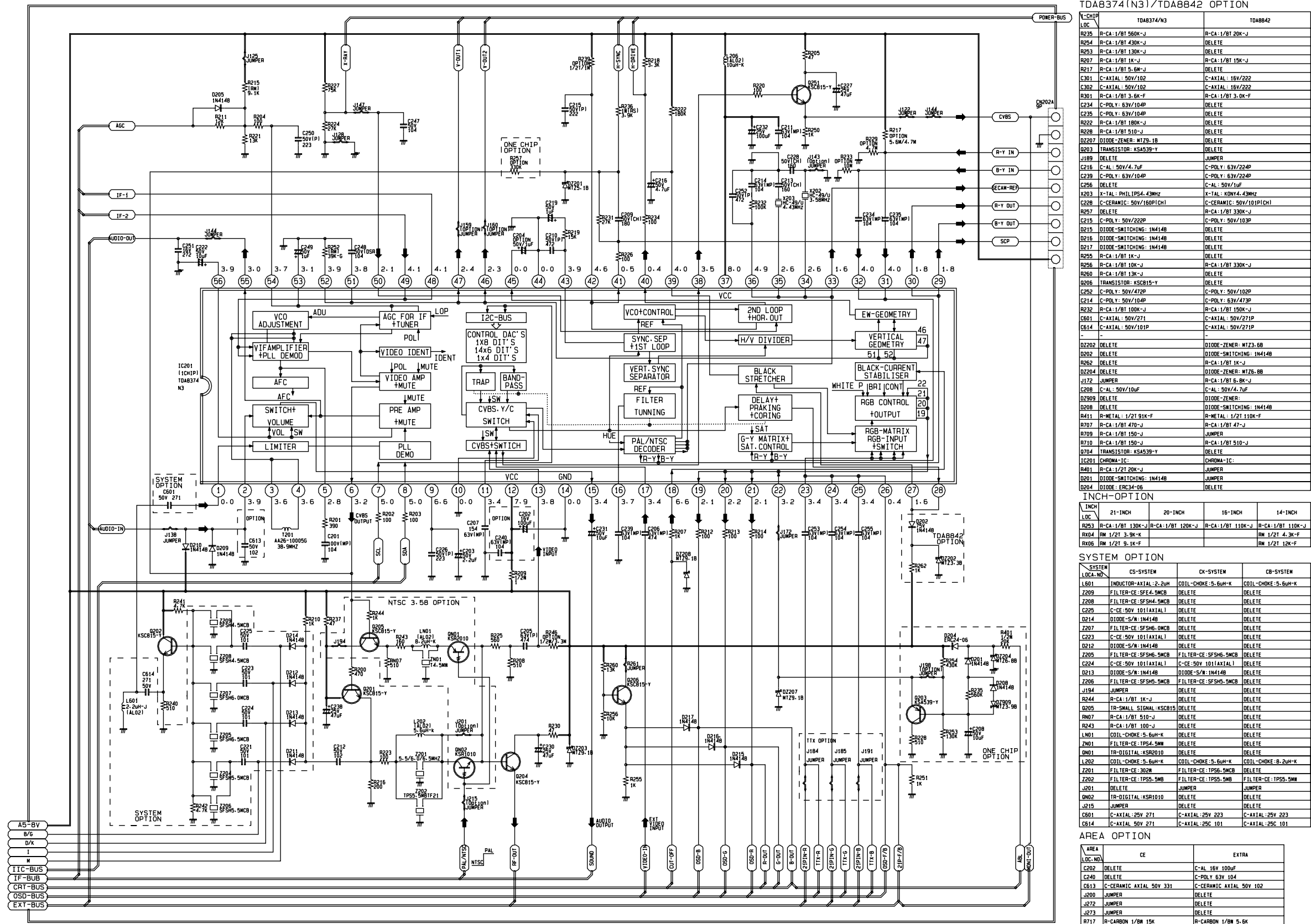
MASTER/TACT-S/W OPTION

S/W	MASTER-S/W	TACT-S/W
LOC	CODE-NO	CODE-NO
R9901	DELETE	R-CA: 1/8T 820-J
SW01	DELETE	SWITCH-TACT-15W-20MA





11-3 ONE CHIP/CHROMA Block



11-4 IF/Sound . EXT-A/V Block

AUDIO-AMP OPTION

LOC. NO.	COMPONENT	VALUE	DELETE
OB11	C-FILM-PEP-50V	472-J	DELETE
OB12	C-AL-50V/0.47uF		DELETE
OB601	CONNECTOR-HEADER-BOX-4P		DELETE
OB602	CONNECTOR-HEADER-AUTO-12P		DELETE
OB701	CONNECTOR-HEADER-AUTO-9P		DELETE
OB703	DIODE-RECTIFIER-FM-GDS		DELETE
OB805	DIODE-RECTIFIER-RGP-15G		DELETE
IC601	ASSY-H/S-SOUND-TDA7057AQ		DELETE
IC602	ASSY-H/S-SOUND-TDA7056B		DELETE
J131	JUMPER		DELETE
J134	JUMPER		DELETE
J177	JUMPER		DELETE
R605	R-CA-1/8T 22K-J		DELETE
R606	R-CA-1/8T 3.6K-J		DELETE
R814	R-FUS:2T 0.47-J		DELETE
R815	R-FUS:2T 0.47-J		DELETE

LINE STEREO FRONT-A/V OPTION

LOC.	COMPONENT	VALUE	DELETE
CE01	C-CERAMIC-50V 101AXIAL		DELETE
CE02	C-CERAMIC-50V 101AXIAL		DELETE
CN701	CONNECTOR-HEADER-3WALL-3P-ANGLE		DELETE
CN702	LEAD CONNECTOR-ASSY-YBWHP50-11-300MM		DELETE
JA701	JACK-RCA:3P-3.6MM		DELETE
LE01	INDUCTOR-AXIAL:10uH-K-AL02		DELETE
LE02	INDUCTOR-AXIAL:10uH-K-AL02		DELETE
PCB	PCB FRONT-A/V:111.5x72x1.61-.66		DELETE
PCB	PCB-LINE STEREO:35x51x1.61-.1E-.2E-.3E		DELETE

MONO/21PIN/LINE STEREO OPTION

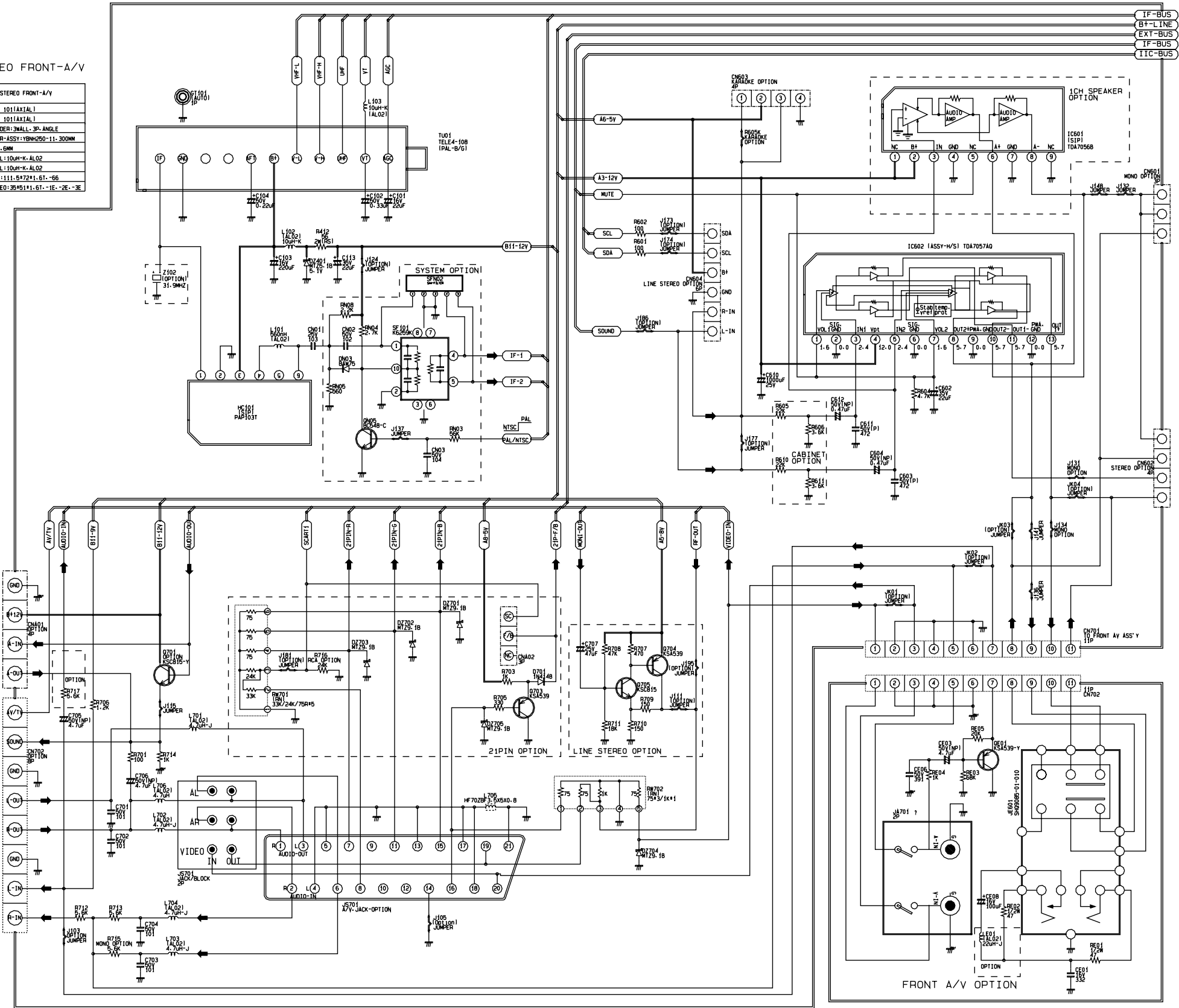
SYSTEM LOC. NO.	MONO RCA-4P	LINE STEREO RCA-6P	21-PIN SCART
C701	DELETE	C-CE:50V 101AXIAL	DELETE
C705	C-AL-50V 0.47uF(NP)	DELETE	C-AL:50V 0.47uF(NP)
C706	C-AL-50V 0.47uF(NP)	DELETE	C-AL:50V 0.47uF(NP)
C707	DELETE	C-AL-25V 47uF	DELETE
CH604	DELETE	POST-HEADER-6P	DELETE
CN702	DELETE	ASSY-LINE STEREO	DELETE
J199	JUMPER	DELETE	JUMPER
J177	JUMPER	DELETE	JUMPER
J186	JUMPER	DELETE	JUMPER
J111	DELETE	JUMPER	DELETE
JS701	JACK-PIN-RCA-4P	JACK-PIN-RCA-6P	JACK-RCA:21P-SCART
L701	DELETE	COIL-CHOK:4.7uH-K	DELETE
L706	COIL-CHOK:4.7uH-K	DELETE	COIL-CHOK:4.7uH-K
Q704	DELETE	TRANSISTOR:KSA539-Y	DELETE
Q705	DELETE	TRANSISTOR:KSC815-Y	DELETE
R601	DELETE	R-CA:1/8T 100-J	DELETE
R712	DELETE	R-CA:1/8T 5.6K-J	DELETE
R713	DELETE	DELETE	R-CA:1/8T 5.6K-J
L704	DELETE	COIL-CHOK:4.7uH-K	COIL-CHOK:4.7uH-K
C704	DELETE	C-CE:50V 101AXIAL	C-CE:50V 101AXIAL
R602	DELETE	R-CA:1/8T 100-J	DELETE
R701	R-CA:1/8T 100-J	DELETE	R-CA:1/8T 100-J
R706	R-CA:1/8T 1.2K-J	DELETE	R-CA:1/8T 1.2K-J
R707	DELETE	R-CA:1/8T 470-J	DELETE
R708	DELETE	R-CS:1/8T 47K-J	DELETE
R709	DELETE	R-CA:1/8T 150-J	DELETE
R710	DELETE	R-CA:1/8T 150-J	DELETE
R711	DELETE	R-CA:1/8T 18K-J	DELETE
R712	DELETE	R-CA:1/8T 5.6K-J	DELETE
J173	DELETE	JUMPER	DELETE
J174	DELETE	JUMPER	DELETE
ASSY			
RW701	DELETE	DELETE	R-NET:33K/24K/75x3-6P
DZ701	DELETE	DIODE-ZENER:W79.1B	DELETE
DZ702	DELETE	DIODE-ZENER:W79.1B	DELETE
DZ703	DELETE	DIODE-ZENER:W79.1B	DELETE
Q703	DELETE	TRANSISTOR:KSA539-Y	DELETE
R703	DELETE	R-CA:1/8T 1K-J	DELETE
D701	DELETE	DIODE-S/W 1N4148	DELETE
R705	DELETE	R-CA:1/8T 330-J	DELETE
DZ705	DELETE	DIODE-ZENER:W79.1B	DELETE
R716	R-CA:1/8T 24K-J	R-CA:1/8T 24K-J	DELETE

SYSTEM OPTION

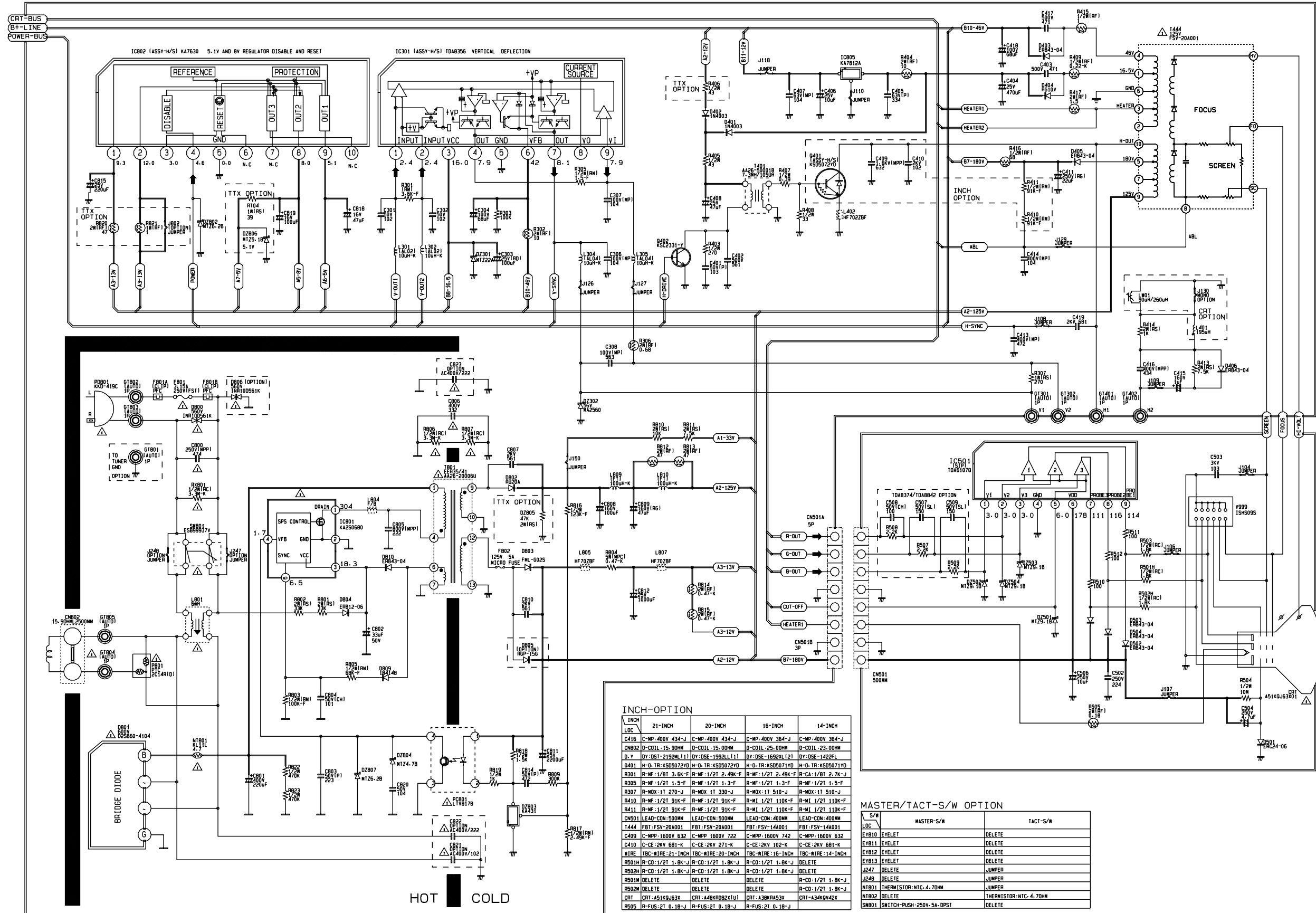
SYSTEM LOC. NO.	CS-SYSTEM	OK-SYSTEM	CB-SYSTEM
J124	JUMPER	DELETE	DELETE
RN08	R-CA:1/8T 2.2K-J	DELETE	DELETE
RN04	R-CA:1/8T 2.7K-J	DELETE	DELETE
CN02	C-CE:50V 101AXIAL	JUMPER	JUMPER
CN03	DIODE-S/W:BAW75	DELETE	DELETE
RN05	R-CA:1/8T 2.2K-J	DELETE	DELETE
CN05	TR-SMALL SIGNAL:BC548	DELETE	DELETE
J137	JUMPER	DELETE	DELETE
CN03	C-CE:50V 101AXIAL	DELETE	DELETE
RN03	R-CA:1/8T 56K-J	DELETE	DELETE
SF101	FILTER-SAW AV-K6259K	DELETE	DELETE
SF102	DELETE	FILTER-SAW AV-K2971M	FILTER-SAW AV-G1963M

FRONT-A/V DELETE OPTION

LOC.	FRONT-A/V	DELETE
J401	DELETE	JUMPER
C709	DELETE	C-ELEC 50V 4.7uF NP
J403	DELETE	JUMPER
J404	DELETE	JUMPER
J141	JUMPER	DELETE
J136	JUMPER	DELETE
J134	JUMPER	DELETE
CN701	POST-HEADER:11P-85-39	DELETE
POST-HEADER:9P-73-38		DELETE



11-5 Power /Vertical /Horizontal /CRT



11-6 A/V Front, SUB

